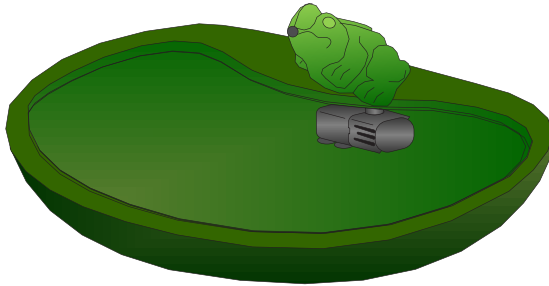


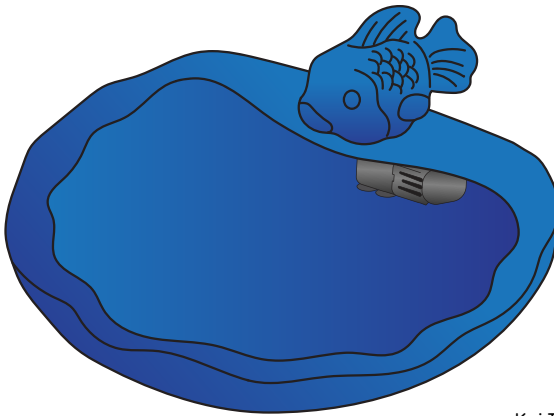
Solar Fountain with Remote Solar Panel



* Styles may vary but assembly will be consistent with this manual



Frog Tabletop



Koi Tabletop

Warnings



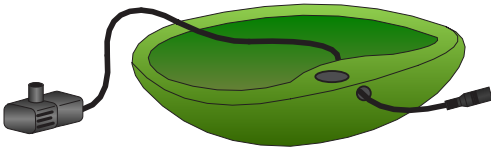
Water must be regularly topped off. We recommend regularly changing the water to ensure it remains clean and free from debris .



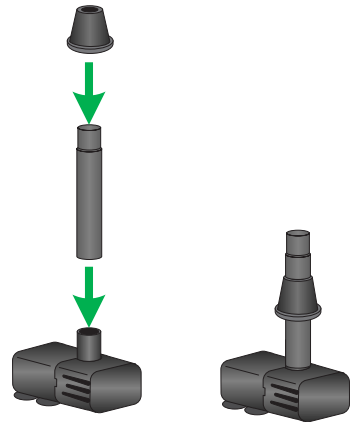
Important!

**Frost causes damage. Store whole product inside during cold weather
Any damage caused by freezing temperature is not covered under warranty.**

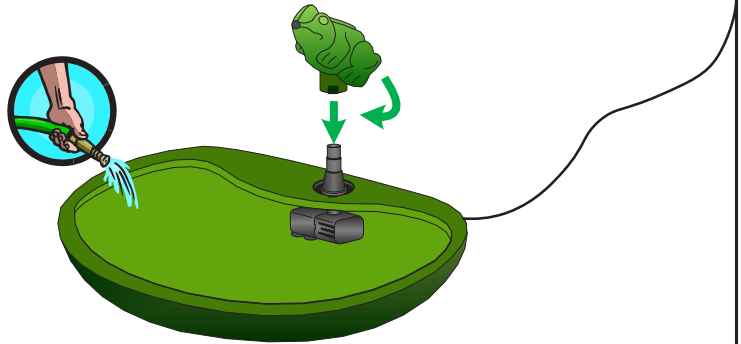
Spouting Tabletop Assembly



Feed cable through hole.



Fit tube and bung to pump.



Insert pump with tube/bung assembly into the bowl. Position the pump so the tube protrudes through the hole in the bowl. Lower the spouting feature onto the tube. Ensure the bung seals, then lock the feature onto the bowl by turning slightly. Fill the bowl with water, ensure it is regularly topped off.

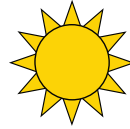
Solar Panel Requires Direct Sun



Adjust solar panel to the desired angle so it gets direct sun.



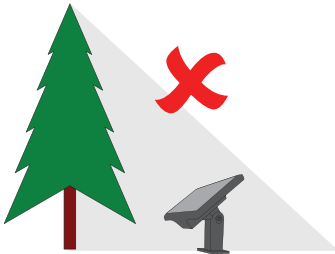
You can use screws (not included) to mount it to a deck or attach the optional stake to use it on the ground.



DIRECT SUN



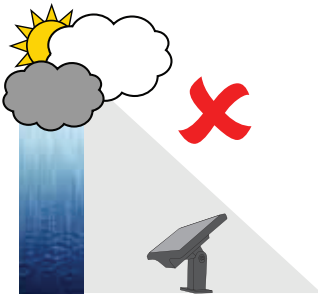
Below Examples are Not Direct Sun



No Shade



No Screens



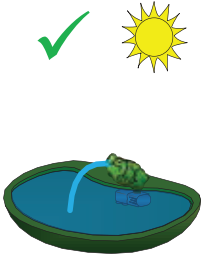
No Clouds



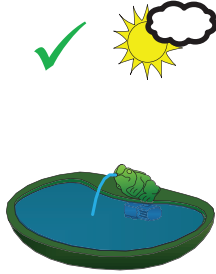
**No Windows
No Indoor Light**

Performance

This product is designed primarily to operate in summer months but will also work in spring and autumn provided there is good sunshine. Performance is directly related to the amount and strength of sunlight received.



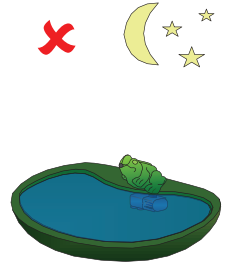
In bright direct sunlight your pump will work well with a consistent fountain height and flow rate.



In slightly cloudy conditions your pump will work however fountain height and flow will vary as clouds pass in front of the sun.

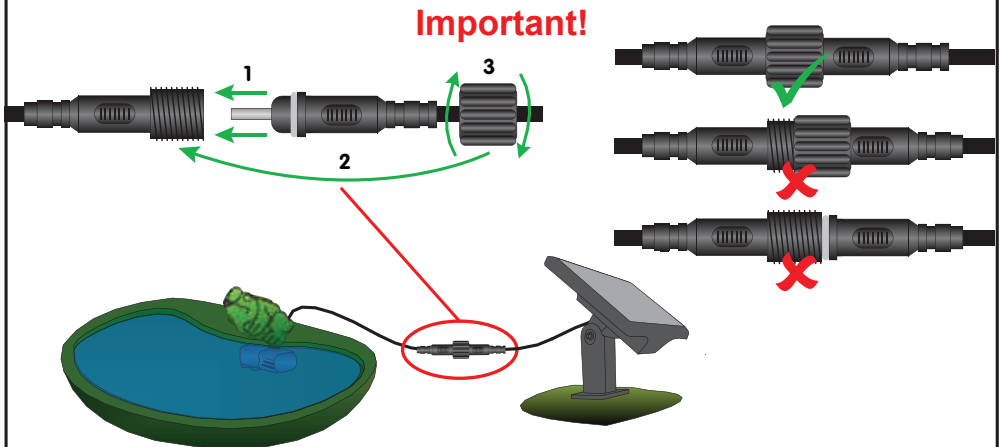


In overcast conditions the solar panel does not generate enough power to run the pump and it will NOT work.



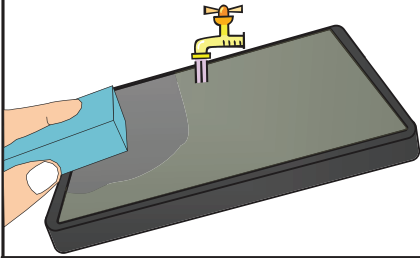
At night the solar panel does not generate power and your pump will NOT work.

Connections



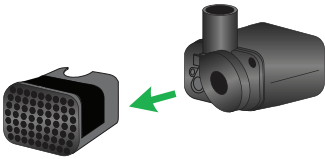
Ensure connection from solar panel to pump are water tight.

Maintenance

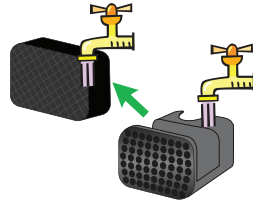


To maintain optimum performance, regularly clean the solar panel using water or glass cleaner in conjunction with a non-abrasive sponge or cloth.

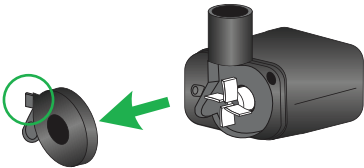
Pump Cleaning / Troubleshooting



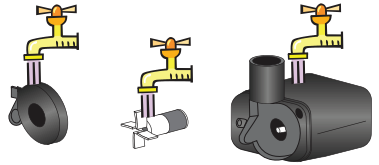
Filter cover can simply be pulled apart as shown.



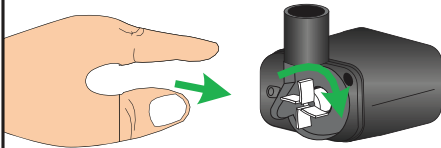
Remove filter material and rinse in water.



Pry off the impeller cover using the tab on the left side. Use a flat head screw driver if needed.



Rinse all parts thoroughly in water. Use cotton swab to clean the inside of pump housing where the impeller sits.



If the pump is not working immediately, try the following for a manual start. Remove the pump cover. Remove the impeller cover, face the panel to the sun, and start manually spinning the impeller clockwise, this can take 1 minute.

Thank you for purchasing this Smart Solar fountain.

Register your Product Here:

<https://smartlivinghg.com/wp/customer-service/product-registration/>

FAQs are available online along with step by step video tutorials to help you with pump cleaning and solar kit assembly.

Visit: <https://smartlivinghg.com/wp/customer-service/faq/>

PROBLEM	RESOLUTION (and page for reference)
The solar panel is in direct sunlight but the pump is not working.	<ol style="list-style-type: none">1. Ensure the connectors from the pump to the solar panel are secure - see pg 62. Ensure the pump is connected to the tube securely - see pg 2-33. Try Manual Pump Start - pg 74. (For Cascade) Ensure the tube is correctly attached to the jug
The pump is running but there is no water flow.	<p>There may be an air bubble in the tube.</p> <ol style="list-style-type: none">1. Try pouring water down the tube to force out the air bubble, then reattach to pump.2. For Cascade: remove tube from top jug and submerge entire tube in main bowl. Once water is flowing out of the tubing, reattach to jug.
Cascade: Water is leaking from Jug	Check the tubing that attaches from the pump to the tube. Most likely the rubber bung is not tight enough in the hole that goes into the jug.

Smart Living Home & Garden warranties your solar panel, pump and battery (for Solar-on-Demand units) for one (1) year from the original date of purchase from authorized distributors and retailers. The warranty covers parts that are properly installed and regularly maintained. If the product fails due to a defect in material or workmanship, Smart Living will replace the defective parts free of charge. Your fountain is designed for outdoor use and with proper care will last for many years. If over time your fountain develops scratches or minor wear from normal use, you can contact our customer service department for easy to apply one step touch up paint.

Please unpack and inspect the entire product upon receipt. Report any broken or missing pieces within five (5) business days of receipt to our customer service department and we will provide replacement parts free of charge. Please do not discard any damaged parts until instructed to do so by our customer service department.



Smart Solar is a Smart Living Home & Garden brand

Telephone: + 1 813 343 5775

Email: customerservice@smartlivinghg.com

Web: www.smartlivinghg.com