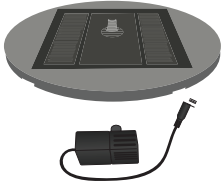


AquaNura LP Solar Birdbath Kit



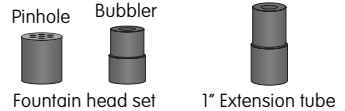
Configuration and Assembly



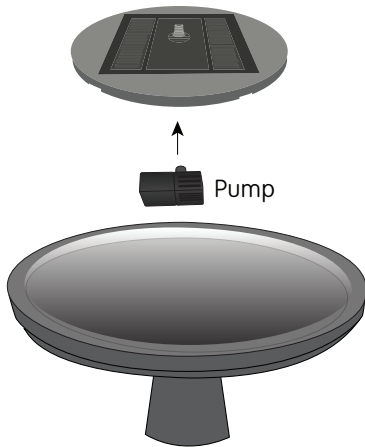
Unit includes:

Solar panel housing x 1
Pump x 1
Fountain head set x 1
Extension Tube x 1

* Birdbath not included



The AquaNura LP functions much like our original larger AquaNura but is designed to fit into smaller, shallow birdbaths. This unit can still be used in a large deeper birdbath and there will simply be more water sitting on top of the solar panel. We have included a 1" extension tube for use in deep birdbaths to elevate the fountain heads above water.



In strong sunlight in a small birdbath or during windy conditions, the pinhole fountain head shown may cause water to spray outside of the birdbath. Only use this fountain head in the right conditions to ensure your birdbath does not lose water.

Warning! Important! Read Me!



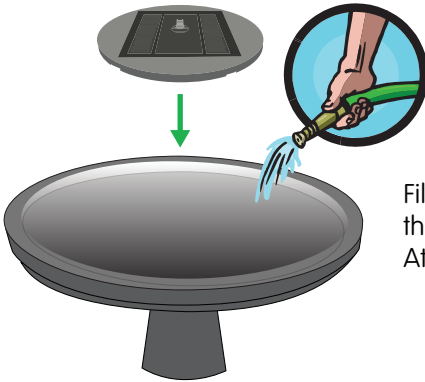
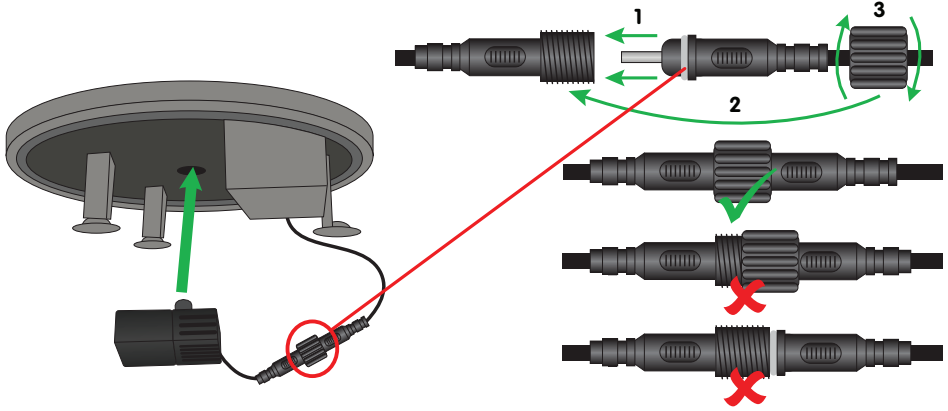
We recommend the water be regularly topped off and changed to ensure it remains clean and free from debris. Shallow birdbaths require more frequent filling due to evaporation or the pump will run dry, which may cause damage



Frost causes damage and is not covered by warranty. Empty water and store product inside during cold weather. For safety, we recommend doing this when the weather is going to dip below 40°F.

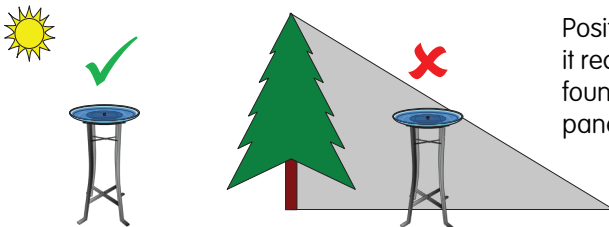
BEFORE USE: Ensure that the connections are water tight. Push the plugs together until they touch the rubber o-ring, slide the threaded cap over the plug and turn the cap until tight.

! Important



Fill your birdbath with water and place the AquaNura into the birdbath. Attach the fountain head of your choice.

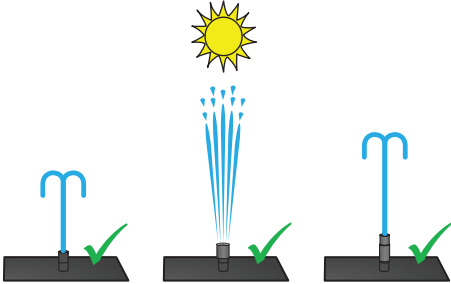
Position



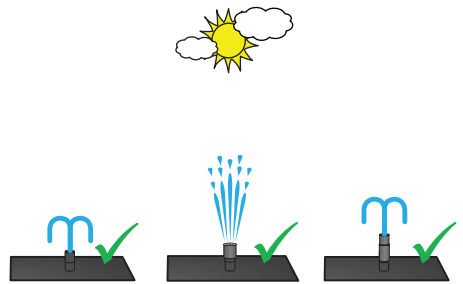
Position your AquaNura so that it receives direct sunlight. The fountain will NOT work if the solar panel is in a shaded area.

Performance

This product is designed primarily to operate in summer months but will also work in spring and autumn provided there is strong direct sunlight. Performance is directly related to the amount and strength of sunlight received. The Pinhole fountain head will work effectively in strong direct sunlight but may need to be removed if there is excessive splashing in small birdbaths. The Bubbler fountain head is preferred for strong sun and/or windy conditions.



In bright direct sunlight your pump will work well with a consistent fountain height and flow rate.



In slightly cloudy conditions your pump will work however fountain height and flow will vary as clouds pass in front of the sun.

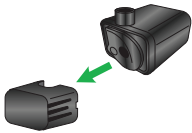


In overcast conditions the solar panel does not generate enough power to run the pump and it will NOT work.

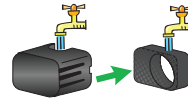


At night the solar panel does not generate power and your pump will NOT work.

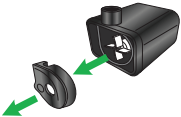
Pump Cleaning / Manual Pump Start



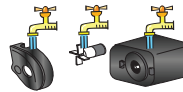
Filter cover can simply be pulled apart as shown.



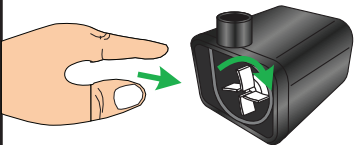
Remove filter material and rinse in water.



Using the tab on the side of the impeller cover, pull off the impeller cover. You may use a flat edge screwdriver to gently pop the cover off

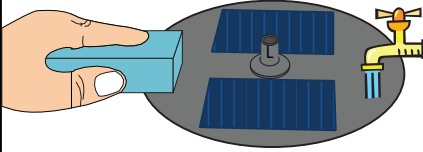


Remove the impeller by pulling out of the pump housing using your fingers or a pair of needle nose pliers. Rinse all parts thoroughly in water.



If the pump is not working immediately, try the following for a manual start. Remove the pump cover. Remove the impeller cover, face the panel to the sun, and start manually spinning the impeller clockwise, this can take 1-3 minutes.

Maintenance



To maintain optimum performance, regularly clean the solar panel using water or glass cleaner with a non-abrasive sponge or cloth.



If the fountain head, nozzle, or tubes become blocked, rinse through with water.

Troubleshooting Tips

- Ensure the cables from the pump to the solar panel are connected properly.
- Ensure the pump tube is connected to the underside of the solar panel.
- Check water level in birdbath to ensure pump is fully submerged.
- Remove and clean impeller from the pump (see pump cleaning section).
- If dirty, clean glass on solar panel housing. Remove any hard water scale/build up.
- Try Manual Pump Start (see pump cleaning section).
- There may be an air bubble in the tube. Try pouring water down the tube to force out the air bubble.

Thank you for purchasing this Smart Solar fountain.

Register your Product Here:

<https://smartlivinghg.com/wp/customer-service/product-registration/>

FAQs are available online along with step by step video tutorials to help you with pump cleaning and solar kit assembly.

Visit: <https://smartlivinghg.com/wp/customer-service/faq/>

Smart Living Home & Garden warranties your solar panel, pump and battery (for Solar-on-Demand units) for one (1) year from the original date of purchase from authorized distributors and retailers. The warranty covers parts that are properly installed and regularly maintained. If the product fails due to a defect in material or workmanship, Smart Living will replace the defective parts free of charge. Your fountain is designed for outdoor use and with proper care will last for many years. If over time your fountain develops scratches or minor wear from normal use, you can contact our customer service department for easy to apply one step touch up paint.

Please unpack and inspect the entire product upon receipt. Report any broken or missing pieces within five (5) business days of receipt to our customer service department and we will provide replacement parts free of charge. Please do not discard any damaged parts until instructed to do so by our customer service department.

Smart Solar is a Smart Living Home & Garden brand

Telephone: +1 813 343 5775

Email: customerservice@smartlivinghg.com

Web: www.smartlivinghg.com

US Patent 7484671, EU Patent 1648620

smart *Living*
home & garden

