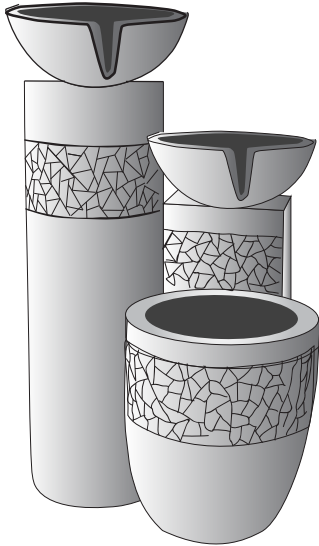


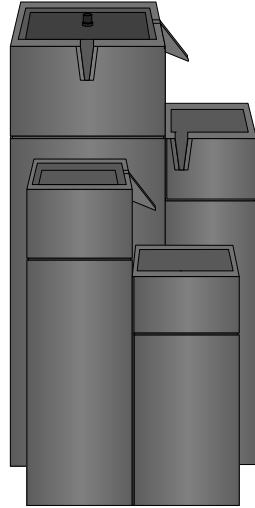
Solar Cascading Fountain



* Styles may vary but assembly will be consistent with this manual

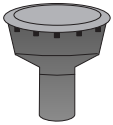


Round Cascading Bowl Fountain



Square Cascade Fountain

Fountain Heads



The 360° fountain head accessory can be used to enhance your fountain.
Note: It will only work effectively in bright sunlight or if battery is charged.



The short nozzle can be used to produce a finer higher stream of water.
Note: May need to be removed in bright sunlight to avoid splashing.

Warnings



Water must be regularly topped off. We recommend regularly changing the water to ensure it remains clean and free from debris.



Important!

Frost causes damage, store whole product inside during cold weather.

Cascading Bowls Fountain Assembly

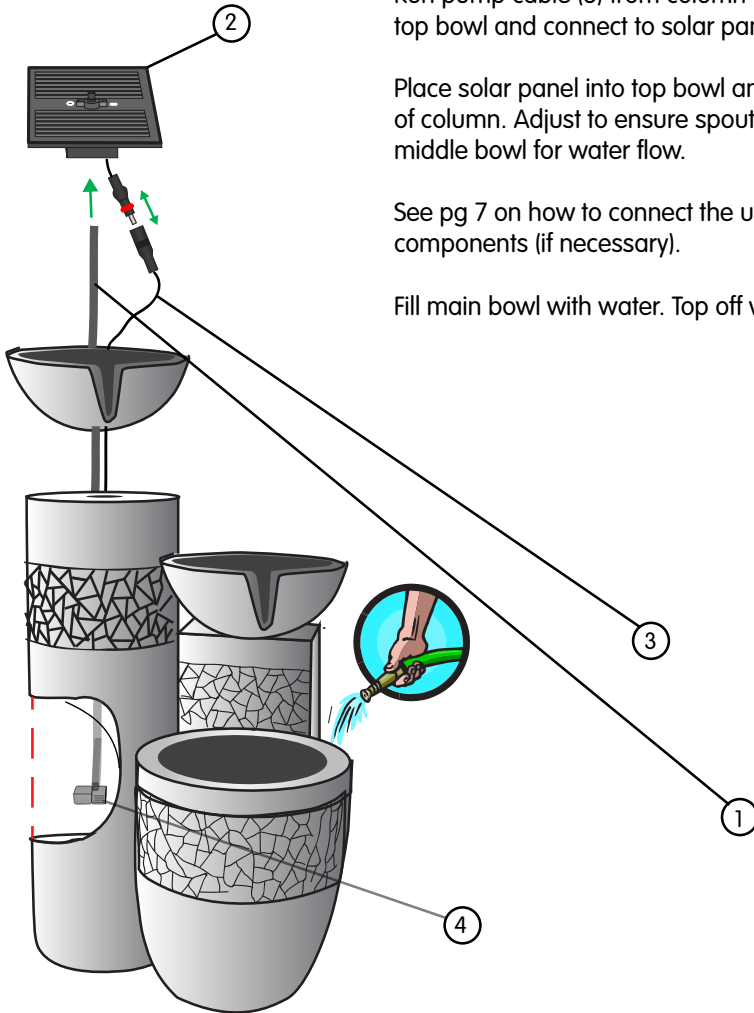
Connect tube (1) to underside of solar panel (2). Run tube through top bowl and into column. Connect tube to pump (4) and place pump (4) into column.

Run pump cable (3) from column and up through top bowl and connect to solar panel.

Place solar panel into top bowl and connect to top of column. Adjust to ensure spout overhangs middle bowl for water flow.

See pg 7 on how to connect the upper tier components (if necessary).

Fill main bowl with water. Top off water as needed.

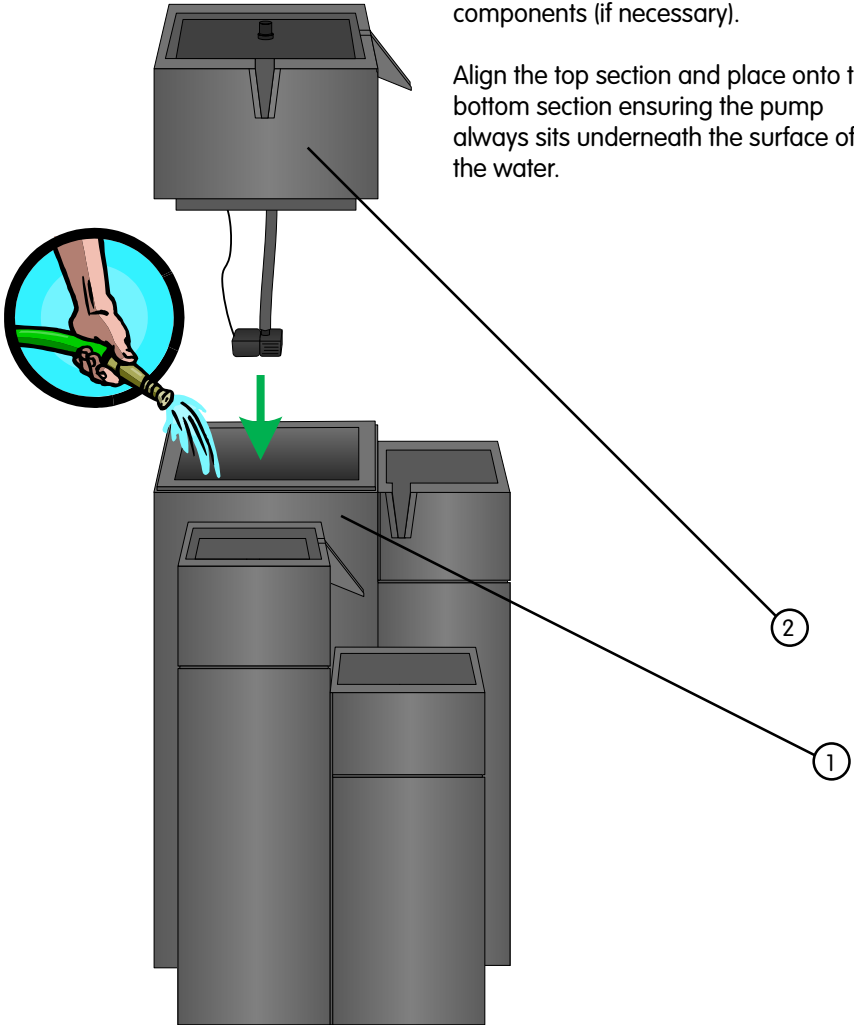


Square Cascading Fountain Assembly

Fill the bottom section (1) with water to about 4 inches below the rim.

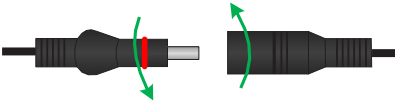
The solar panel and pump (2) are pre-assembled into the top section. See pg 7 on how to connect the upper tier components (if necessary).

Align the top section and place onto the bottom section ensuring the pump always sits underneath the surface of the water.

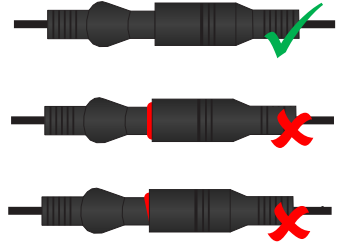


IMPORTANT!

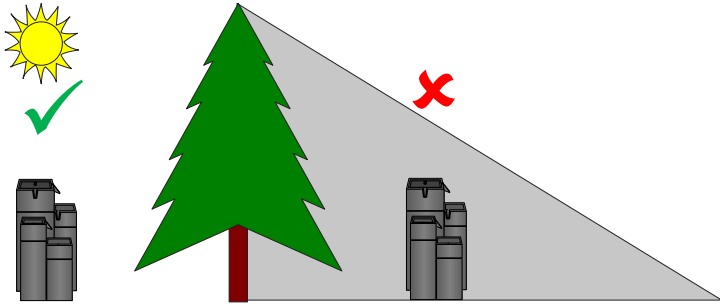
Important!



When reconnecting the pump and panel take care to ensure that the connectors are water tight. Slightly twist the connectors when pushing together, ensure the red o-ring seal remains in its groove and it is not displaced.



Position

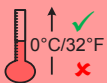


Position your fountain so that receives direct sunlight. The fountain will NOT work if the solar panel is in a shaded area.

Warnings



Water must be regularly topped off. We recommend regularly changing the water to ensure it remains clean and free from debris.

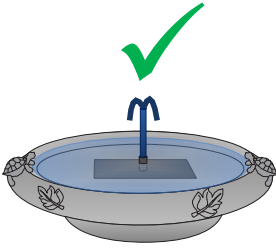


Important!

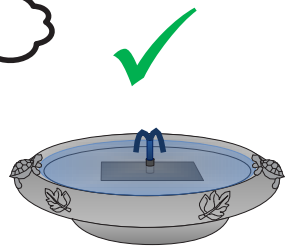
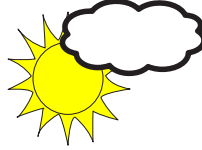
Frost causes damage, store whole product inside during cold weather.

Performance

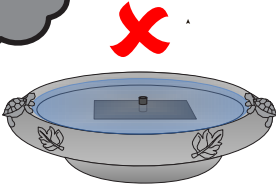
This product is designed primarily to operate in summer months but will also work in spring and autumn provided there is good sunshine. Performance is directly related to the amount and strength of sunlight received.



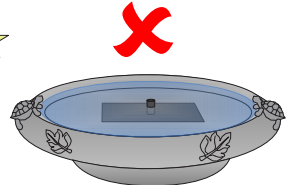
In bright direct sunlight your pump will work well with a consistent fountain height.



In slightly cloudy conditions your pump will work however fountain height will vary as clouds pass in front of the sun.



In overcast conditions the solar panel does not generate enough power to run the pump and it will NOT work.



At night the solar panel does not generate power and your pump will NOT work.

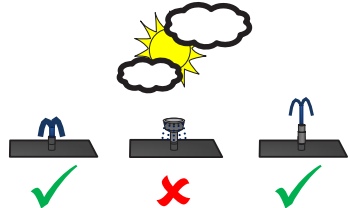
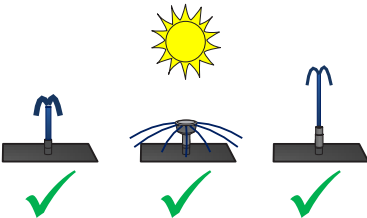
Fountain Heads



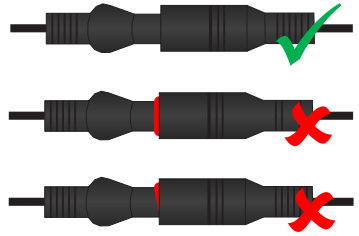
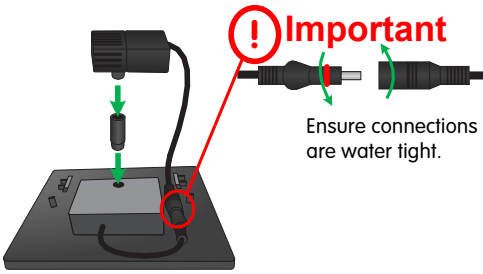
The 360° fountain head accessory can be used to enhance your fountain. Note: It will only work effectively in bright sunlight or if battery is charged.



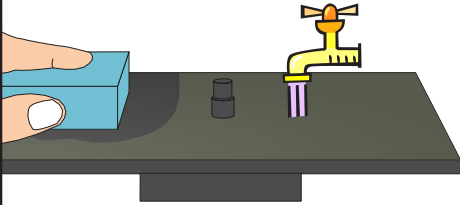
The short nozzle can be used to produce a finer higher stream of water. Note: May need to be removed in bright sunlight to avoid splashing.



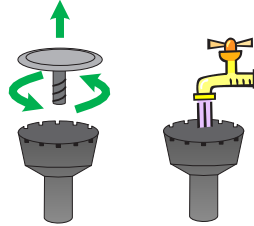
Connections



Maintenance



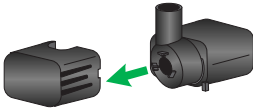
To maintain optimum performance, regularly clean the solar panel using water or glass cleaner in conjunction with a non-abrasive sponge or cloth.



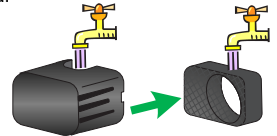
If the fountain head, nozzle, or tubes become blocked, rinse through with water.

Pump Cleaning / Troubleshooting

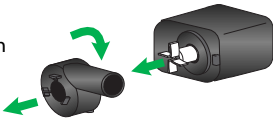
Filter cover can simply be pulled apart as shown.



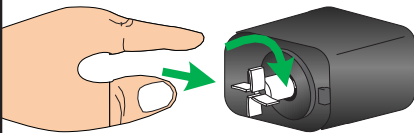
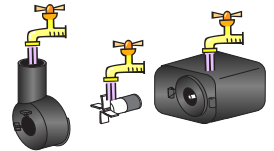
Remove filter material and rinse in water.



Turn off impeller cover to release as shown, impeller can be easily removed

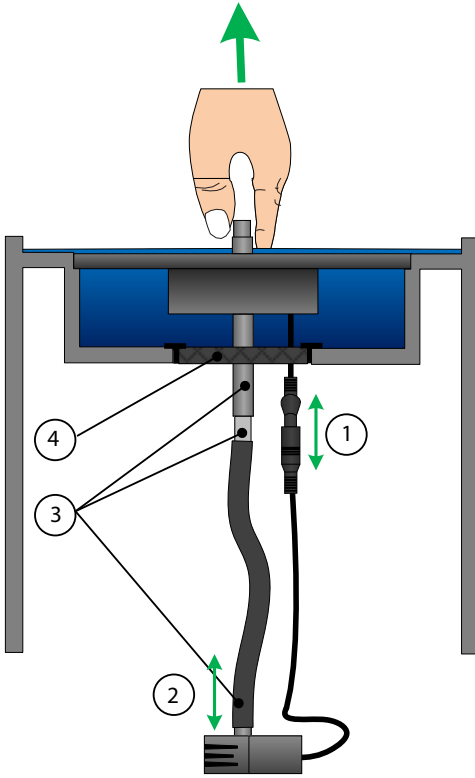


Rinse all parts thoroughly in water.



If the pump is not working immediately, try the following for a manual start. Remove the pump cover. Remove the impeller cover, face the panel to the sun, and start manually spinning the impeller clockwise, this can take 1-3 minutes.

Pump Removal / Assembly

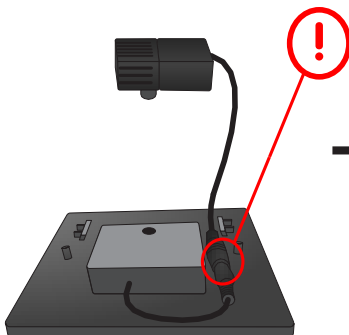


To ensure the tubes from the pump are connected to the solar panel, try lifting the solar panel gently by pulling on the solar panel nozzle. If the panel lifts out the tubes are not connected. See illustration below for assembly.

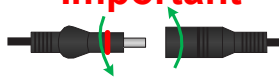
Remove the top part, unplug the pump connectors (1), and disconnect the tubing (2).

When re-assembling, ensure tubes (3) are connected through to the back of the solar panel, and bung (4) is securely fitted in the hole.

Pump Connectors



Important



Check to ensure black pump connectors are water tight. When reconnecting slightly twist when pushing together, ensure the red sealing ring remains in its groove and is not displaced.

Thank you for purchasing this Smart Solar fountain.

Register your Product Here:

<https://smartlivinghg.com/wp/customer-service/product-registration/>

FAQs are available online along with step by step video tutorials to help you with pump cleaning and solar kit assembly.

Visit: <https://smartlivinghg.com/wp/customer-service/faq/>

PROBLEM	RESOLUTION (and page for reference)
The fountain is in sun but the pump is not working.	1. Ensure the connections are secure and that pump tube is connected to underside of solar panel – see pg 7 for Assembly 2. Pump needs manual start - see pg 6 Pump Troubleshooting
No water flow from the top of the solar panel.	1. Try manual start on pump – see pg 6 2. Ensure the tubes from pump are connected to the underside of the solar panel - see pg 7 for Assembly
Water is coming through the top of the solar panel, but water is not overflowing from the spouts into the main bowl below.	Rubber bung is not securely in place. 1. Push the rubber bung securely into the reservoir hole to create a seal – see pg 7 for Assembly

Smart Living Home & Garden warranties your solar panel, pump and battery (for Solar-on-Demand units) for one (1) year from the original date of purchase from authorized distributors and retailers. The warranty covers parts that are properly installed and regularly maintained. If the product fails due to a defect in material or workmanship, Smart Living will replace the defective parts free of charge. Your fountain is designed for outdoor use and with proper care will last for many years. If over time your fountain develops scratches or minor wear from normal use, you can contact our customer service department for easy to apply one step touch up paint.

Please unpack and inspect the entire product upon receipt. Report any broken or missing pieces within five (5) business days of receipt to our customer service department and we will provide replacement parts free of charge. Please do not discard any damaged parts until instructed to do so by our customer service department.



smartLiving
home & garden

Smart Solar is a Smart Living Home & Garden brand

Telephone: + 1 813 343 5775

Email: customerservice@smartlivinghg.com

Web: www.smartlivinghg.com

US Patent 7484671 & EU Patent 1648620